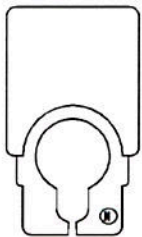
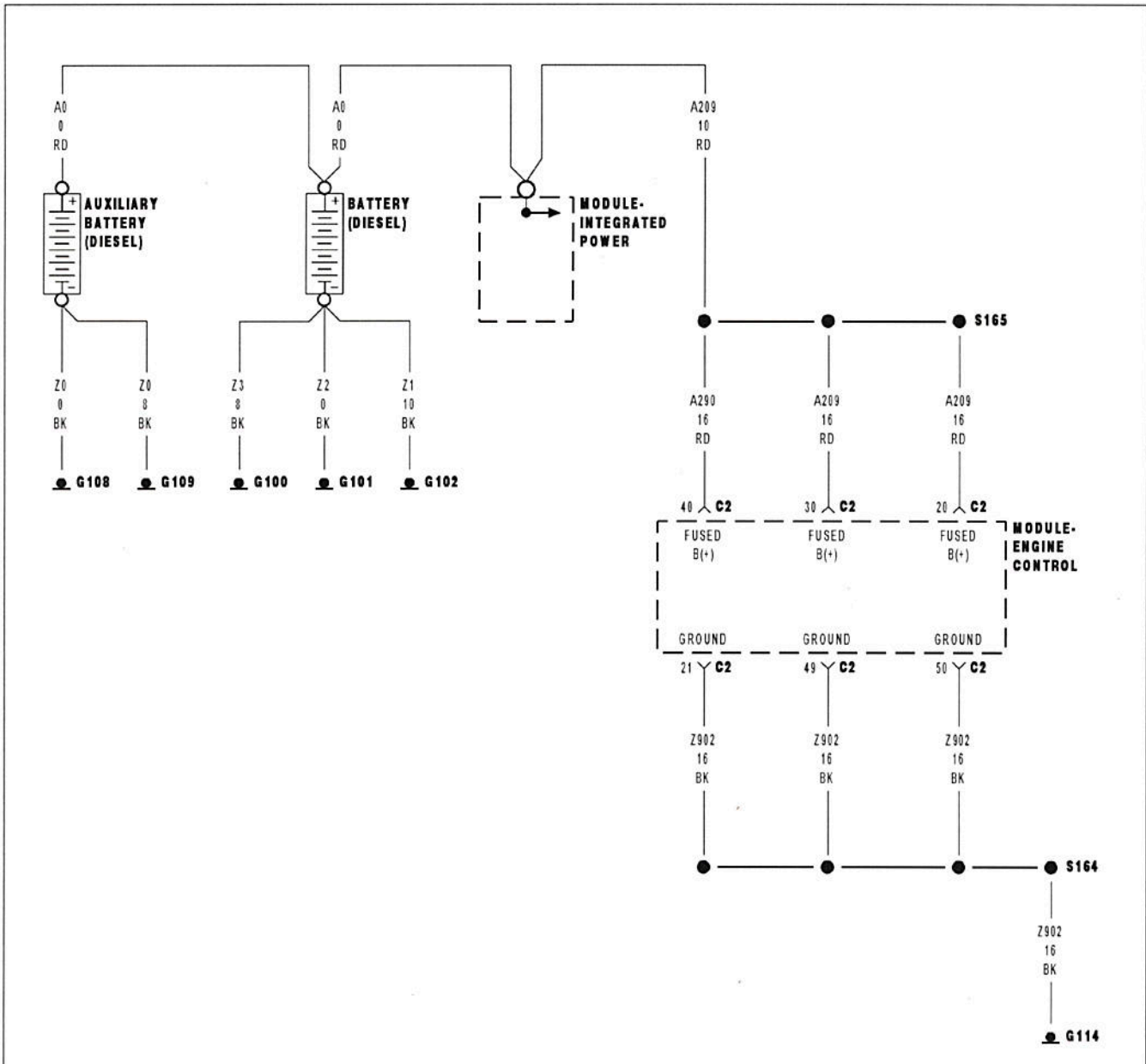
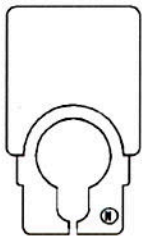


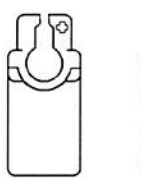
P2509-POWERDOWN DATA LOST ERROR



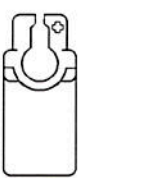
BATTERY-NEGATIVE (DIESEL LEFT BATTERY)



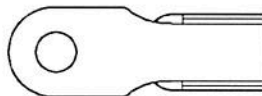
BATTERY-NEGATIVE (DIESEL RIGHT BATTERY)



BATTERY-POSITIVE (DIESEL LEFT BATTERY)



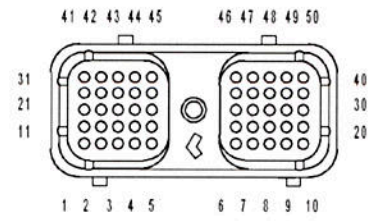
BATTERY-POSITIVE (DIESEL RIGHT BATTERY)



BATTERY-POSITIVE (DIESEL RIGHT BATTERY)



BATTERY-POSITIVE (DIESEL RIGHT BATTERY)



MODULE-ENGINE CONTROL C2

P2509-POWERDOWN DATA LOST ERROR (CONTINUED)

For the Engine circuit diagram (Refer to 8 - ELECTRICAL/ELECTRONIC CONTROL MODULES/ENGINE CONTROL MODULE - SCHEMATIC - ELECTRICAL)

For a complete wiring diagram Refer to Section 8W.

- **When Monitored:**
Continuous - key on or key off.
- **Set Condition:**
Loss of voltage detected at the ECM for a calibrated amount of time.

Possible Causes
POOR CONNECTIONS AT THE BATTERIES LOW BATTERY VOLTAGE OPEN FUSED B+ TO ECM OPEN GROUND CIRCUIT BATTERY + SHORTED TO OTHER CIRCUITS RETURN CIRCUIT SHORTED BATTERY + SHORTED TO GROUND INTERMITTENT CONDITION

Always perform the Pre-Diagnostic Troubleshooting procedure before proceeding. (Refer to 9 - ENGINE - DIAGNOSIS AND TESTING)

Diagnostic Test

1. POOR CONNECTIONS AT THE BATTERIES

Visually inspect the wiring at the battery for damaged wires, or corrosion.

Are the connections tight and free of corrosion?

- Yes** >> Go To 2
- No** >> Repair the poor connections at the batteries.
 Perform POWERTRAIN VERIFICATION TEST VER - 1 (DIESEL). (Refer to 8 - ELECTRICAL/ELECTRONIC CONTROL MODULES/ENGINE CONTROL MODULE - DIAGNOSIS AND TESTING)

2. LOW BATTERY VOLTAGE

Measure the voltage between the positive and negative posts of the batteries.

Is the battery voltages both above 12 volts?

- Yes** >> Go To 3
- No** >> Recharge or replace the battery (s).
 Perform POWERTRAIN VERIFICATION TEST VER - 1 (DIESEL). (Refer to 8 - ELECTRICAL/ELECTRONIC CONTROL MODULES/ENGINE CONTROL MODULE - DIAGNOSIS AND TESTING)

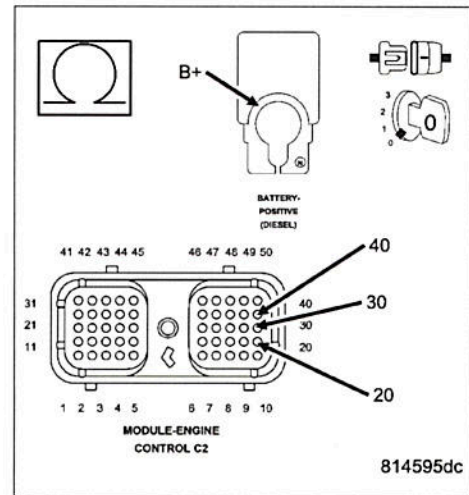
P2509-POWERDOWN DATA LOST ERROR (CONTINUED)

3. OPEN FUSED B+ TO ECM

Turn the ignition off.
 Disconnect the ECM harness connectors.
 Turn the ignition on.
 Measure the resistance between the positive battery post and the ECM supply circuits.

Is the resistance less than 10 Ohms?

- Yes** >> Go To 4
- No** >> Repair the open fused B+ circuit to ECM.
 Perform POWERTRAIN VERIFICATION TEST VER - 1 (DIESEL). (Refer to 8 - ELECTRICAL/ELECTRONIC CONTROL MODULES/ENGINE CONTROL MODULE - DIAGNOSIS AND TESTING)

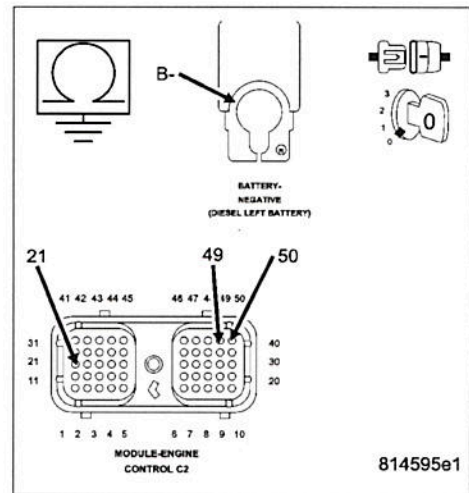


4. OPEN GROUND CIRCUIT

Measure the resistance between the negative battery post and the ECM ground circuits.

Is the resistance less than 10 Ohms?

- Yes** >> Go To 5
- No** >> Repair the open ground circuit.
 Perform POWERTRAIN VERIFICATION TEST VER - 1 (DIESEL). (Refer to 8 - ELECTRICAL/ELECTRONIC CONTROL MODULES/ENGINE CONTROL MODULE - DIAGNOSIS AND TESTING)



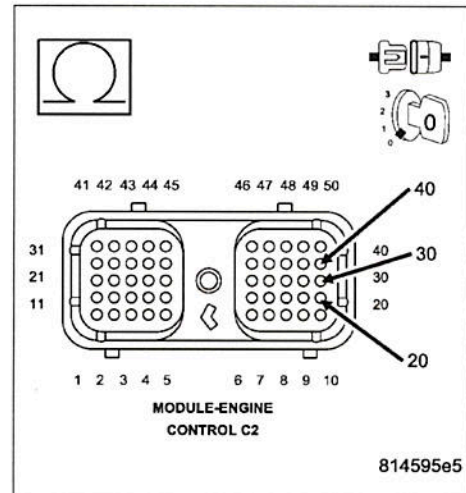
P2509-POWERDOWN DATA LOST ERROR (CONTINUED)

5. BATTERY + SHORTED TO OTHER CIRCUITS

Measure the resistance between the ECM supply circuits and all other circuits in the ECM harness connector, except other supply circuits.

Is the resistance greater than 100k Ohms?

- Yes** >> Go To 6
- No** >> Repair the battery circuit short to other circuits in engine harness.
Perform POWERTRAIN VERIFICATION TEST VER - 1 (DIESEL). (Refer to 8 - ELECTRICAL/ELECTRONIC CONTROL MODULES/ENGINE CONTROL MODULE - DIAGNOSIS AND TESTING)

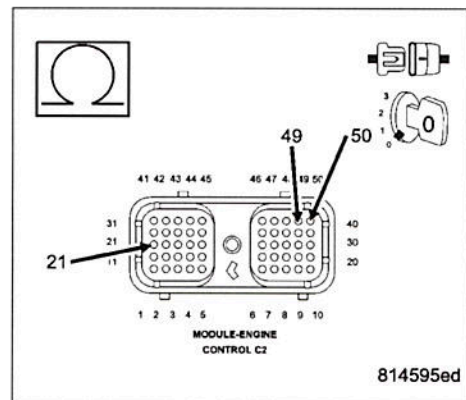


6. RETURN CIRCUIT SHORTED

Measure the resistance between the ECM return circuits and all other circuits in the ECM harness connector, except other return circuits.

Is the resistance greater than 100k Ohms?

- Yes** >> Go To 7
- No** >> Repair or replace the engine harness.
Perform POWERTRAIN VERIFICATION TEST VER - 1 (DIESEL). (Refer to 8 - ELECTRICAL/ELECTRONIC CONTROL MODULES/ENGINE CONTROL MODULE - DIAGNOSIS AND TESTING)



7. BATTERY + SHORTED TO GROUND

Measure the resistance between the ECM B+ supply circuits and ground.

Is the resistance greater than 100k Ohms?

- Yes** >> Refer to the INTERMITTENT CONDITION Symptom (Diagnostic Procedure). (Refer to 9 - ENGINE - DIAGNOSIS AND TESTING)
- No** >> Repair Battery + shorted to ground.
Perform POWERTRAIN VERIFICATION TEST VER - 1 (DIESEL). (Refer to 8 - ELECTRICAL/ELECTRONIC CONTROL MODULES/ENGINE CONTROL MODULE - DIAGNOSIS AND TESTING)

